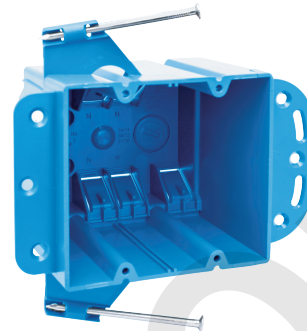


AMERICAN PLASTIC BOX

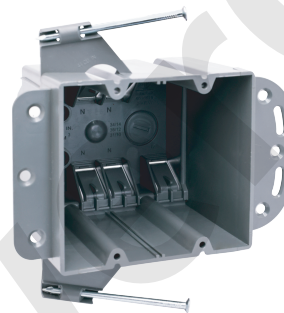
MODEL NUMBER	APB02DN
CUBIC CAPACITY	44 Cubic Inches
DESCRIPTION	Deep; New Work; 2-Gang; Captive Nail and Bracket Support Mounting; Switch and Outlet Box with Wire Clamps; For Use With Non-Metallic Sheathed Cable. With Six Integral Clamps
MATERIAL	PPO
MOUNTING MEANS	Captive Nails and Bracket Support
PRODUCTS SIZE L×W×D	4"×3-3/4"×4"
OUTER BOX SIZE L×W×D(CM)	56×42.5×43
STD. CTN. QTY.	60 Pcs
CERTIFICATIONS	ISO9001, ISO14001, ETL5010519, 2-hour fire rating
COLOR	Blue, Gray, Red..... Various Colors Can Be Customised



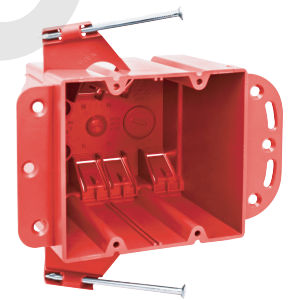
Blue



Intertek
5010519
2-HR-W-C



Gray



Red

Various Colors Can Be Customised

FEATURES & BENEFITS

- Designed and listed for use with non-metallic sheathed cable in accordance with Article 314 of the National Electrical Code®, they make fast work of any residential or light commercial application.
- Non-metallic boxes feature PPO construction for easier installation, greater performance and lower installation cost.
- All PPO boxes are permissible for use with 90° C connectors.
- Wiring System Non-metallic sheathed cable.
- Various Colors Can Be Customised.
- ETL Listed and carries a 2-hour fire rating.

