

## FEATURES

### INTENDED USE

Provides general illumination in commercial and residential applications. Ideal for use in foyers, hallways, corridors, living rooms, bedrooms, offices, stairways and more.

### CONSTRUCTION

LED slim recessed light applies new material to create a cozy environment, giving no humming and makes this fixture completely glare-free providing more natural light.

### OPTICS

The slim recessed light use the world's leading LED chips with higher lumens and lower power. saving you up to 90% in energy costs.

### ELECTRICAL

Fixture operates at 120 volts, 60Hz.

4"unit standard input = 6watts, 80 lumens per watt

5"unit standard input = 9watts, 80 lumens per watt.

6"unit standard input = 12watts, 80 lumens per watt

### DIMMABLE

Seamless dimming capabilities (100%-10%) to suit any mood or decor. Our baffle trim recessed lighting fixtures offer instant start up with no warm up. Easily adjust sizing to fit.

### INSTALLATION

Follow our installation guide for a quick and easy setup. Suitable for damp locations. Directly install retrofit fixture to the ceiling J-box in your kitchen, family room, bedroom, bathroom, and common areas in your home or office.

### LISTINGS

ETL certified to be brighter than existing fixtures in your home.

### WARRANTY

5-year limited warranty. Complete warranty terms located at:

[www.epoweron.com](http://www.epoweron.com)

### NOTE:

Actual performance may differ as a result of end-user environment and application.

All values are design at typical values, measured under laboratory conditions at 25C.

Specifications subject to change without notice.

## LED SLIM RECESSED LIGHT



CERTIFICATION



## SPECIFICATIONS

ITEM	Voltage	Wattage	Lumens	CCT	CRI	Finish	Environment	Dimming	Size
EPRD00110701	120V	6W	480Lm	3000K/4000K/5000K Selectable	80	WHITE	Damp Location	TRAIC (10-100%)	4"
EPRD00210701	120V	9W	710Lm	3000K/4000K/5000K Selectable	80	WHITE	Damp Location	TRAIC (10-100%)	5"
EPRD00310701	120V	12W	960Lm	3000K/4000K/5000K Selectable	80	WHITE	Damp Location	TRAIC (10-100%)	6"

Manufactured by:



1010 Martin Luther King Jr. Pkway.  
 Suite 200  
 Durham, NC 27713  
[www.epoweron.com](http://www.epoweron.com)

Contents are subject to change without notice.

## DIMENSIONS

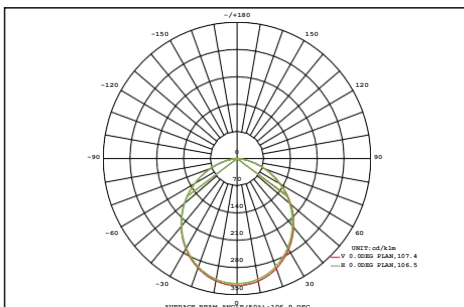
Model Number	Size	H	D	CUT
EPRD00110701	4"	0.68"	4.74"	3.85"
EPRD00210701	5"	0.68"	5.74"	4.56"
EPRD00310701	6"	0.68"	6.69"	6.1"

## TEST REPORT

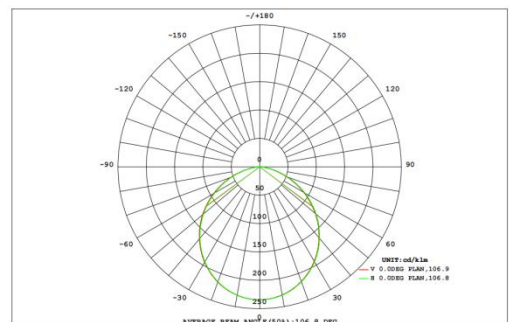
ITEM	Voltage	Wattage	Withstand voltage test	Ringing wave test (L-N)	Ringing wave test (L/N-G)
EPRD00110701	120V	6W	1500VAC 1 Minute	1000V	2500V
EPRD00210701	120V	9W			
EPRD00310701	120V	12W			

## LIGHTING DISTRIBUTION

LUMINAIRE PHOTOMETRIC TEST REPORT FOR 6"



LUMINAIRE PHOTOMETRIC TEST REPORT FOR 4"

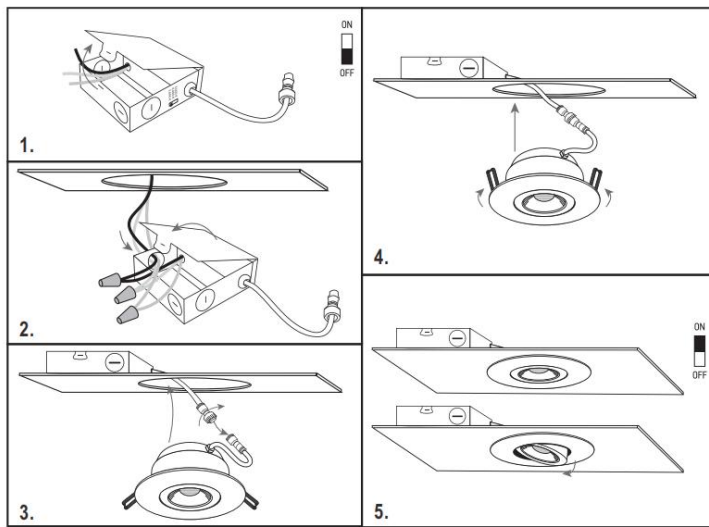


Manufactured by:  
 **ePowerOn**  
 1010 Martin Luther King Jr. Pkway.  
 Suite 200  
 Durham, NC 27713  
 www.epoweron.com

Contents are subject to change without notice.

## INSTALLATION STEPS

1. Make sure the fixture is disconnected from the J-Box. Open it.
2. Connect the wires as shown in step #2. Use wire nuts to insure you have a proper connection. Close the J-Box when completed.
3. Insert the J-Box into the cut hole", leaving the connection cable outside. Connect the fixture to the J-Box by inserting the cable and securing it with a cap as shown in step #3.
4. Push the spring loaded clips upwards and insert the fixture base into the mounting hole. Release the clips and the fixture will be "pulled" into place against the ceiling.
5. Once assembly is complete, turn the power on to ensure the fixture is operating properly



### Steps for Surface Mount Installation

## PACKING STRUCTURE

Model Number	Inner pack				Outer pack					Pallet(H 84")	
	Length (in)	Width (in)	Height (in)	Pieces	Width (in)	Length (in)	Height (in)	Pieces	G.W (LBS)	Cases	Pieces
EPRD00110701	5.12	5.12	2.52	1	25.98	15.94	5.71	30		60	1800
EPRD00210701	6.1	6.1	2.52	1	25.98	18.9	6.7	30		36	1080
EPRD00310701	7.09	7.09	2.52	1	25.98	14.76	7.68	20		43	860