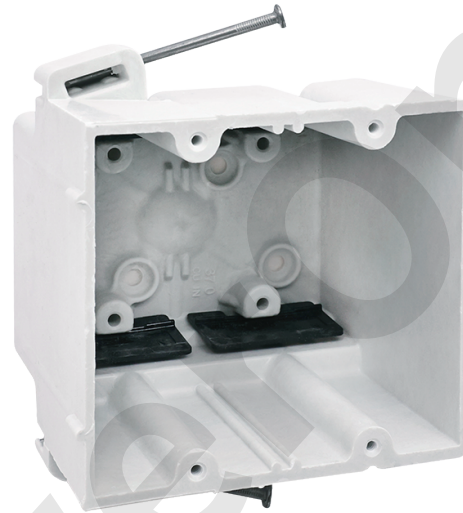


FIBER GLASS OUTLET BOX

| | |
|-------------------------------------|--|
| MODEL NUMBER | FG02N |
| CUBIC CAPACITY | 37 Cubic Inches |
| DESCRIPTION | 2-Gang Off-White Fiberglass New Work Deep Switch/Outlet Interior Electrical Box. |
| MATERIAL | BMC |
| MOUNTING MEANS | Nails |
| PRODUCTS SIZE L×W×D | 4"×3-3/4"×3-7/16" |
| OUTER BOX SIZE L×W×D(CM) | 51×45.5×32.7 |
| STD. CTN. QTY. | 60 Pcs |
| CERTIFICATIONS | ISO9001, ISO14001, ETL5010519, 2-hour fire rating |
| COLOR | Off-White |



Intertek
5010519
2-HR-W



FEATURES & BENEFITS

- Knockouts on fiberglass boxes are complete, reducing drafts and easily removed with wire for no tools installation
- Device holes are pre-tapped and tapered for secure device installation and drastically reduce device pull out
- Fiberglass boxes feature factory installed Speed Clamps to provide a secure hold on installed wiring
- Mounted with angled mid nails
- Offset gauge marks on the box give positive stop for the proper wall thickness
- Leveling ribs position the face of the box parallel to the wall surface
- High Strength Fiberglass Reinforced Polyester Material
- Non-distorting in high heat, impact resistant in cold temps
- Machine tapped device holes for faster installation
- ETL Listed and carries a 2-hour fire rating

