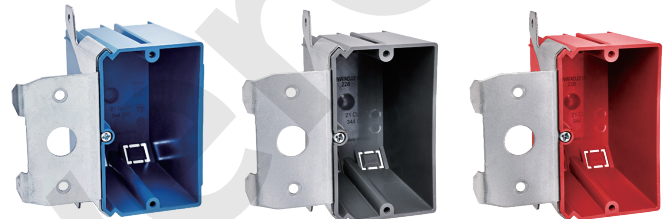


AMERICAN PLASTIC BOX

MODEL NUMBER	APB121-ADJ
CUBIC CAPACITY	21 Cubic Inches
DESCRIPTION	New Work; 1-Gang; Adjustable Bracket Mounting; For Use With Non-Metallic Sheathed Cable. With Four Knockouts
MATERIAL	PPO
MOUNTING MEANS	Adjustable Bracket
PRODUCTS SIZE L×W×D	2.25"×3.65"×3.32"
OUTER BOX SIZE L×W×D(CM)	51×34.5×37
STD. CTN. QTY.	100 Pcs
CERTIFICATIONS	ISO9001, ISO14001, ETL5010519, 2-hour fire rating
COLOR	Blue, Gray, Red..... Various Colors Can Be Customised



Intertek
5010519
2-HR-W-C



Blue

Gray

Red

Various Colors Can Be Customised

FEATURES & BENEFITS

- Designed and listed for use with non-metallic sheathed cable in accordance with Article 314 of the National Electrical Code®, they make fast work of any residential or light commercial application.
- Non-metallic boxes feature PPO construction for easier installation, greater performance and lower installation cost.
- All PPO boxes are permissible for use with 90° C connectors.
- Wiring System Non-metallic sheathed cable.
- Various Colors Can Be Customised.
- ETL Listed and carries a 2-hour fire rating.

