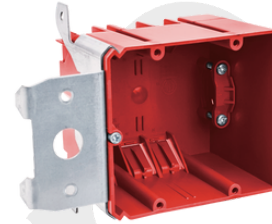


AMERICAN PLASTIC BOX

MODEL NUMBER	APB234N-ADJ
CUBIC CAPACITY	34 Cubic Inches
DESCRIPTION	New Work; 2-Gang; Adjustable Bracket Mounting; Large 220V Knockout; For Use With Non-Metallic Sheathed Cable. With Six Integral Clamps
MATERIAL	PPO
MOUNTING MEANS	Adjustable Bracket
PRODUCTS SIZE L×W×D	4.00"×3.65"×3.00"
OUTER BOX SIZE L×W×D(CM)	51.5×36.5×32.5
STD. CTN. QTY.	60 Pcs
CERTIFICATIONS	ISO9001, ISO14001, ETL5010519, 2-hour fire rating
COLOR	Gray, Red, Black..... Various Colors Can Be Customised



Intertek
5010519
2-HR-W-C



Various Colors Can Be Customised

FEATURES & BENEFITS

- Designed and listed for use with non-metallic sheathed cable in accordance with Article 314 of the National Electrical Code®, they make fast work of any residential or light commercial application.
- Non-metallic boxes feature PPO construction for easier installation, greater performance and lower installation cost.
- All PPO boxes are permissible for use with 90° C connectors.
- Wiring System Non-metallic sheathed cable.
- Various Colors Can Be Customised.
- ETL Listed and carries a 2-hour fire rating.

