

15 AMP GFCI RECEPTACLE (TAMPER RESISTANT) USB (A+C) COMBO

BCG-003U

DESCRIPTION

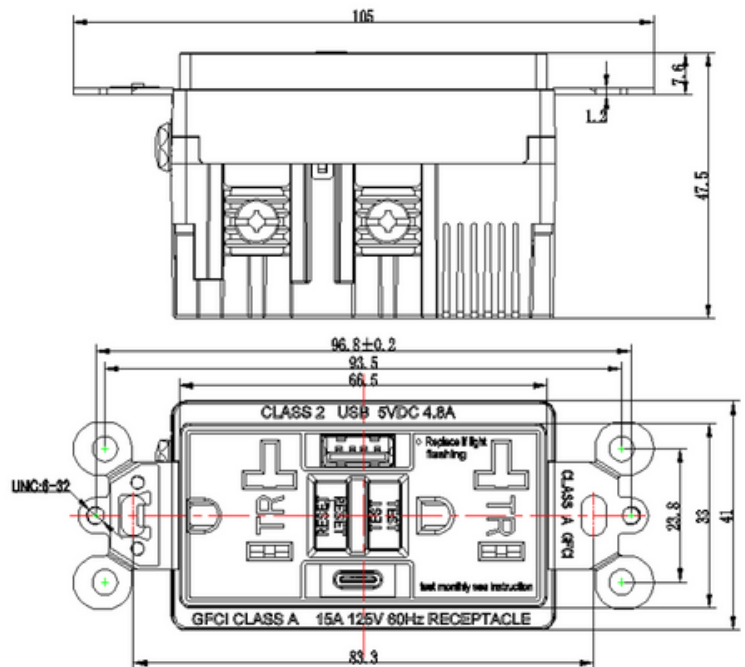


1. The use of high-quality thermoplastic materials, with reasonable structural design to ensure superior strength and durability.
2. The light provides simple, intuitive feedback on the power supply and protection status. If the indicator (LED) shows a red light, it indicates that the GFCI socket has been correctly installed. After reset, the indicator (LED) shows that the green light indicates that the socket is working properly. At the end of the life of the GFCI socket, the red indicator light flashes to remind you to replace the socket in time.
3. This GFCI with USB interface, provides 5V/4.2A power supply, when the GFCI trip off the USB power off, while the USB interface has a grounding fault current trip protection function, using the 5V device is not sudden death by electric shock.
4. Protective Door (TR) : it can prevent the use of foreign objects to contact the electrical part of the socket, can protect children from the risk of electric shock.
5. Continuous ground fault protection is provided to detect actual ground fault and trip even when self-checking is performed.

COMMON TECHNICAL DATA

Size	105 * 41 * 47.5 mm
Color	Cover: White (Customizable) Base: Black (Customizable)
Enclosure	PC
Terminal	Copper Alloy Acid Pickling
Mounting Yoke	Zinc Plated Steel
Weight	142g
Certification	cULus
Standards	UL943, UL498, UL1310
Receptacle Rating	15A/125Vac
Dielectric Voltage Withstand	1500V (AC)
Mechanical Life	3000 times
Flame Class	UL-94 V2
Trip Threshold	4-6mA
Trip Time	<25mS
Insertion Force	<178N
Release Force	<67N
Retention Force	>13N
Wires	12-14AWG
UPC Code	00850065482651

DIMENSIONS



DISTRIBUTED BY:



20 AMP GFCI DEAD FRONT RECEPTACLE

TSI-20 (TAMPER RESISTANT)

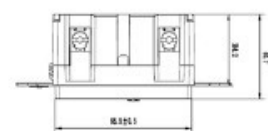
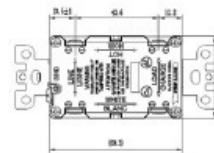
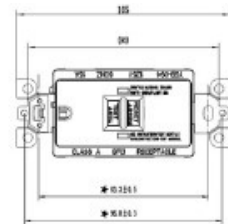


DESCRIPTION

- Constructed with premium high-impact resistant thermoplastic materials and rational structure design, ensures superior strength and durability.
- Two Indicator Light provides simple, intuitive feedback on power and protection status. If the indicator (LED) glows green, you have installed the GFCI receptacle correctly and it is working properly. The GFCI outlet automatically conducts a Self-Test(the red light will blink once) every 40 seconds to ensure the GFCI is continually working. When the GFCI receptacle reaches the end of its' life the red indicator will turn on, it reminds you to replace the outlet in time.
- Provides continuous ground fault protection -- detects and trips on actual ground fault even when self-test is being conducted.

COMMON TECHNICAL DATA

Size	105*42.8*40.7mm
Color	Cover: White (Customizable) Base: Black (Customizable)
Enclosure	PC
Terminal	Copper Alloy Acid Pickling
Mounting Yoke	Zinc Plated Steel
Weight	123g
Standards	UL498/UL943/CSA C22.2 No.144.1
Receptacle Rating	20A/125Vac
Dielectric Voltage	1500V (AC)
Mechanical Life	6000 times
Flame Class	UL-94 V2
Trip Threshold	5mA
Trip Time	<25mS
Insertion Force	<178N
Release Force	<67N
Retention Force	>13N
Wires	12-14AWG



CERTIFICATION

